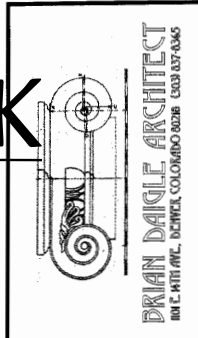


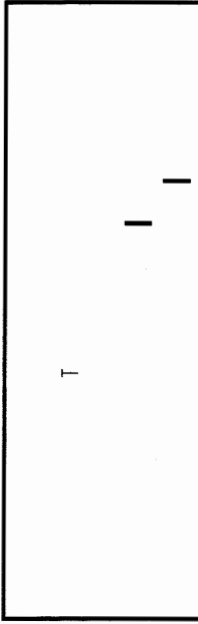
SAVANNAH at SOUTHCREEK

Buildings 1 through 9

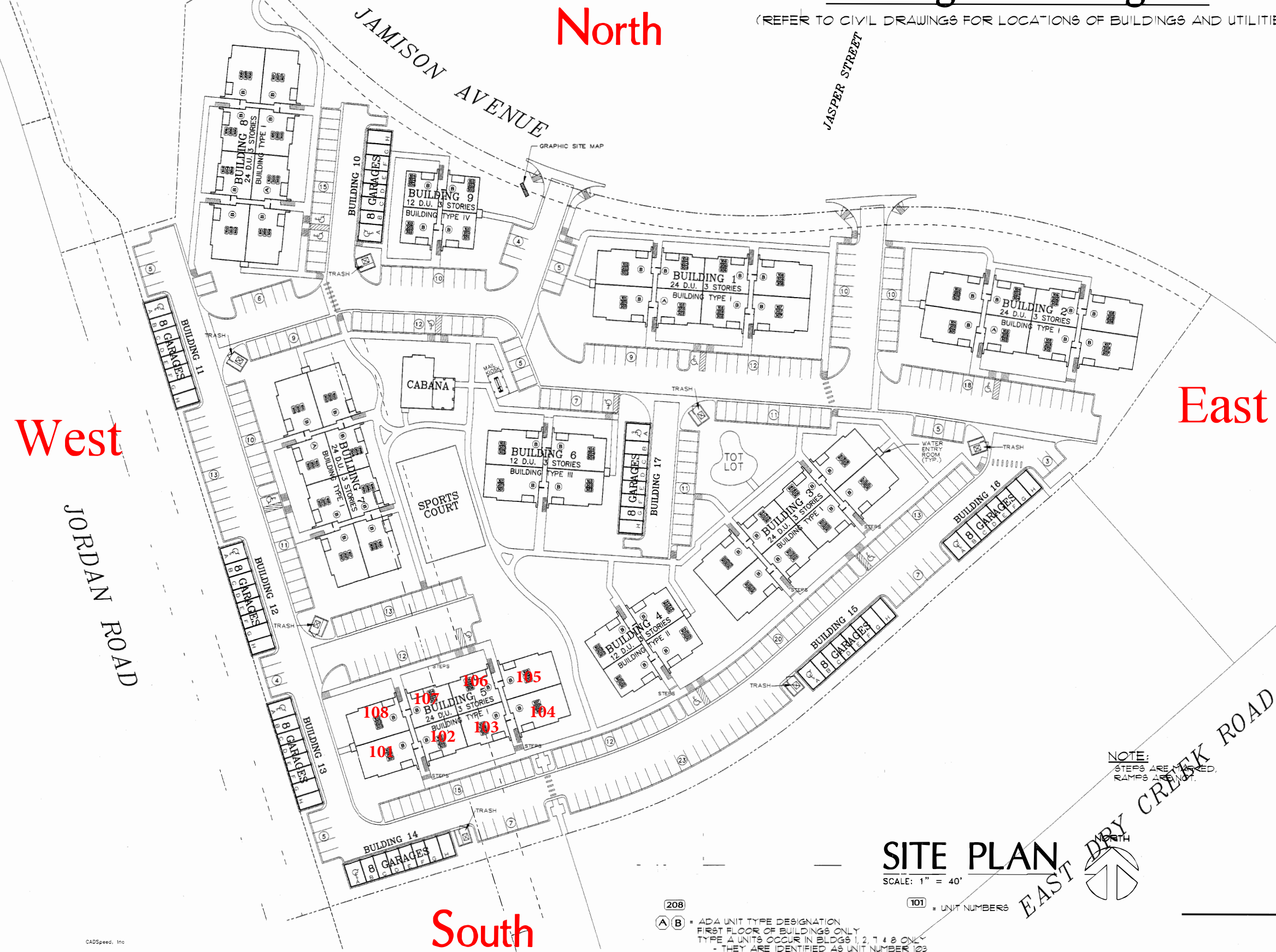
(REFER TO CIVIL DRAWINGS FOR LOCATIONS OF BUILDINGS AND UTILITIES)



AmberHomes, inc.
 14901 East Hampden Avenue
 Suite 320
 Aurora, Colorado 80014
 phone 303/671-5556
 fax 303/671-5558



SAVANNAH AT SOUTHCREEK
 LOT 1, BLOCK 1, SOUTHCREEK SUBDIVISION FILING NO. 6
 ARAPAHOE COUNTY, COLORADO
ARCHITECTURAL SITE PLAN
BUILDING TYPES I, II, III, and IV

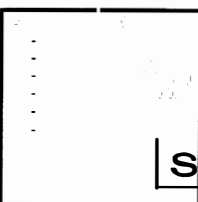


NOTE:
 STEPS ARE
 RAMPING ARE INDICATED.

SITE PLAN

SCALE: 1" = 40'

- 208 (A) (B) = ADA UNIT TYPE DESIGNATION FIRST FLOOR OF BUILDINGS ONLY TYPE A UNITS OCCUR IN BLDGS 1, 2, 7 & 8 ONLY - THEY ARE IDENTIFIED AS UNIT NUMBER 103
- 101 = UNIT NUMBERS



revisions
 proj. no.: CS-0328
 2/2/04 (REISSUE DATE)
 date: 11/20/03
 sheet no.

A0